

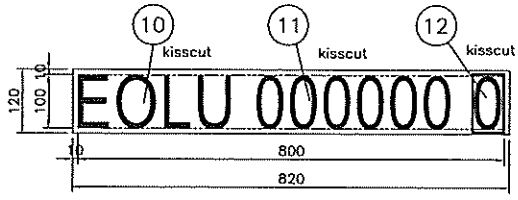
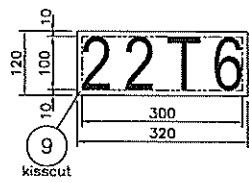
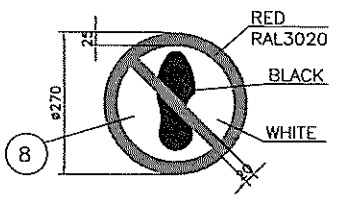
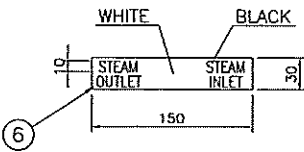
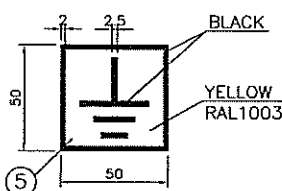
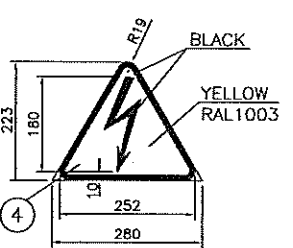
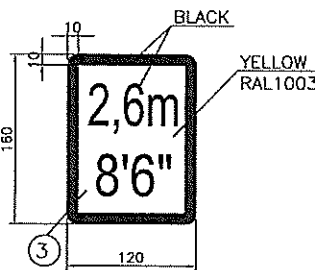
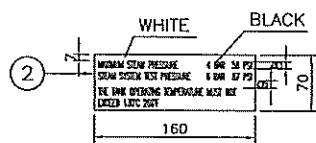
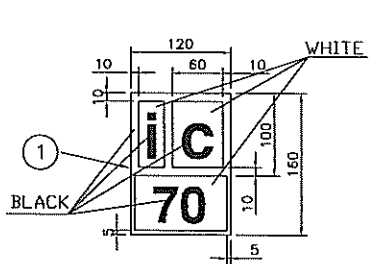
REVISION A			DRAWING APPROVAL	
AUTHORITY	SIGN. DATE	DESCRIPTION	AUTHORITY	SIGNATURE DATE
DRAWN			DESIGN	
DESIGN			QUALITY ASSURANCE	
QUALITY ASSURANCE			CONTRACTS	
CONTRACTS			INSPECTION AUTHORITY	
INSPECTION AUTHORITY			CLIENT	

IMPORTANT NOTE(S):
 重要提示:
 1) ALL MARKINGS TO BE BLACK LETTERING AND WHITE BACKGROUND UNLESS OTHERWISE SPECIFIED (SEE NOTE 2 AND PART LIST DESCRIBED)
 除注释2和标题栏中有说明外, 所有标记均为白底黑字;
 2) ITEM 3, 4, 5 AND 13 TO BE BLACK LETTERING AND YELLOW BACKGROUND
 序号3, 4, 5和13的底色(RAL1003)为黄色;
 3) THE FONT AS PER OUR SUPPLIED.
 除公司标记外, 22#, 其余数字和字母均采用我方提供字号;
 4) ITEM 10, 11 AND 12 SEE TABLE (J0930)
 前1, 号10, 号11和12的规格由我方提供(工令: J0930)

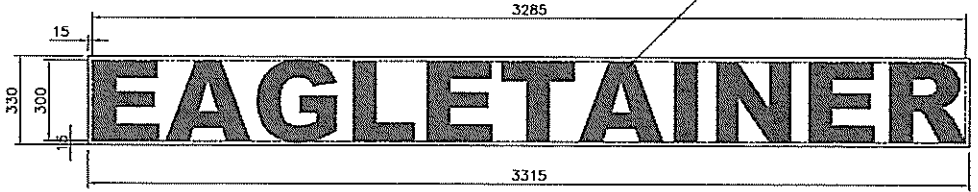
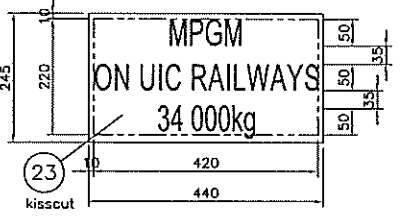
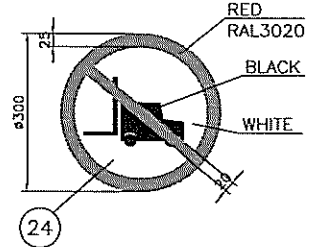
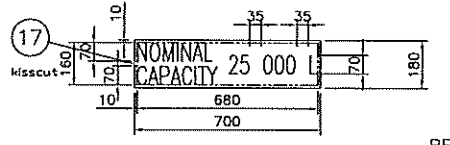
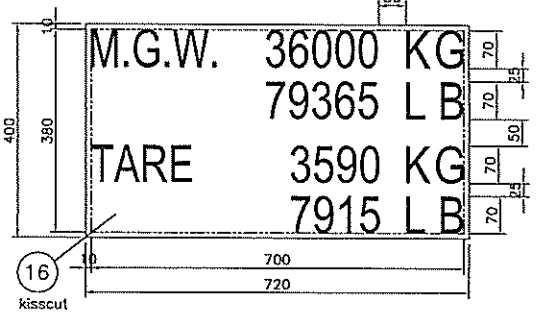
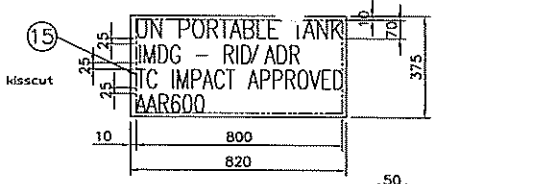
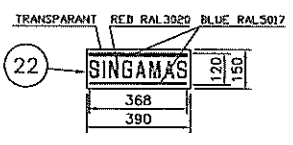
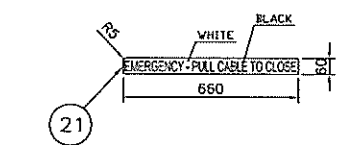
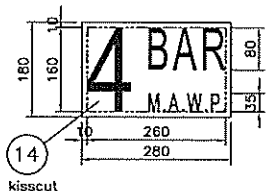
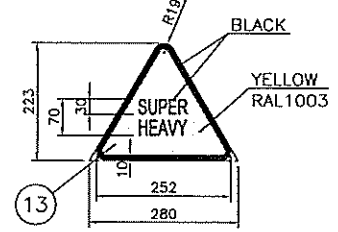
PARTS LIST

No.	QTY	MAT CODE	DESCRIPTION	REFERENCE
29				
28				
27				
26	1		NAME PLATE "BOTTOM DISCHARGE" 75x45X2	
25	1		Univalve Discharge Valve Decal 845/0302	
24	2		NO FORKLIFT LIFTING DECAL	
23	1	MISSOURI	UIC WEIGHT MARK	
22	2	MISSOURI	SINGAMAS LOGO	
21	1		REMOTE CONTROL CABLE DECAL	
20	1		INSPECTION AUTHORITY - B.V.	
19				
18	2		OWNER LOGO (300mm HIGH, COLOUR RAL5010)	
17	1	MISSOURI	NOMINAL CAPACITY (70mm HIGH)	
16	1	MISSOURI	WEIGHT PANEL (70mm HIGH)	
15	2	MISSOURI	APPROVALS DECAL (70mm HIGH)	
14	2	MISSOURI	WORKING PRESSURE DECAL	
13	2		SUPER HEAVY DECAL	
12	MISSOURI	MISSOURI	ISO AUTO CONTROL NUMBER (100mm HIGH)	
11	MISSOURI	MISSOURI	SERIAL NUMBER (100mm HIGH)	
10	MISSOURI	MISSOURI	OWNER CODE (100mm HIGH)	
9	4	MISSOURI	COUNTRY CODE, DIMENSION & TYPE(100mm HIGH)	
8	2		NO STEP DECAL	
7	1		DANGEROUS PLATE	
6	1		IN/OUT DECAL STEAM TUBE INLET(10mm HIGH)	
5	1		EARTH DECAL	
4	1		OVERHEAD POWER LINE WARNING DECAL	
3	2		MAX. HEIGHT DECAL	
2	1		'STEAM HEATING' DECAL (8mm HIGH)	
1	2		UIC APPROVAL DECAL	

		GUANGDONG SHUN AN DA PACIFIC CONTAINER CO., LTD. GANGKOU ROAD LEIJU SHAN, FOSHAN GUANGDONG, CHINA 528322 TEL: +86 757 23337843 FAX: +86 757 23337822	
SCALE: N.T.S.	CLIENT: Eagle Liner		
DRAWN: Kazum	DRAWING NAME:	25 000 Ltr TANK MARKINGS	
CHECKED:	标记		
REVIEWED:			
APPROVED:			
DATE: 27-07-2009	DRAWING NUMBER / 019		
THIS DRAWING AND INFORMATION IS THE PROPERTY OF SINGAMAS AND MAY NOT BE COPIED TO ANY THIRD PARTY WITHOUT ANY WRITTEN PERMISSION.			
FF3	0930	25	TM 00 0
MODEL	JOB NR	CAPTY	SECTN SHF NR REV.



OWNER CODE SERIAL NUMBER & CHECK DIGIT SEE TABLE
 * 箱主代号10, 箱号11和核对数字12见附表
 * 每个罐箱做6条, 其中2条白色, 4条黑色。



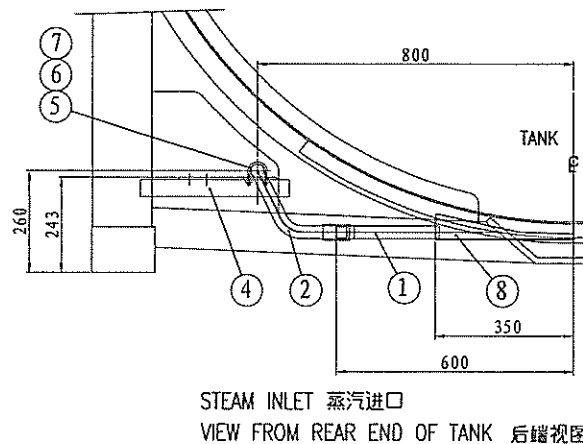
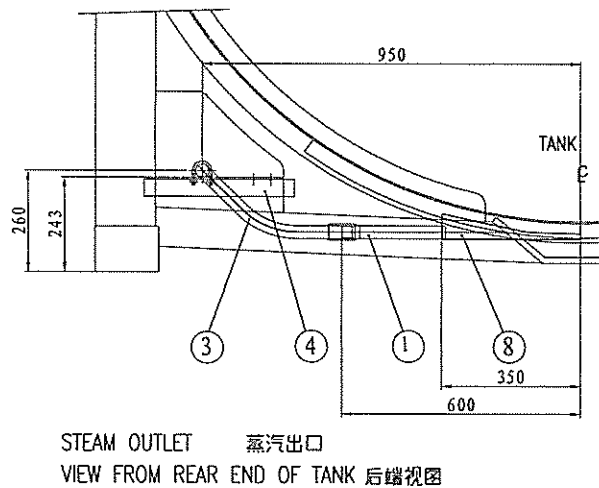
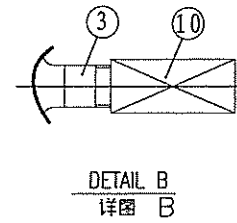
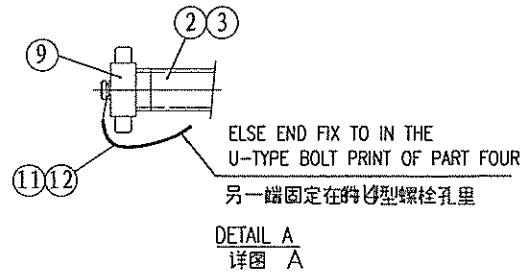
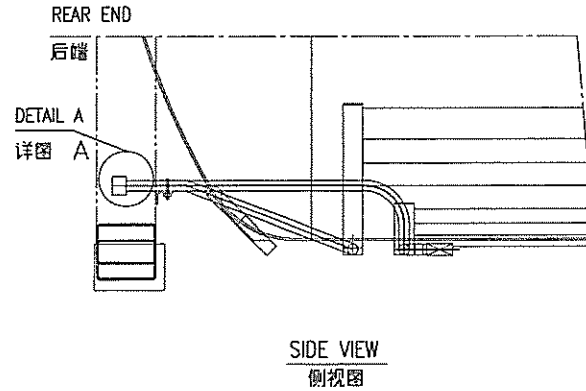
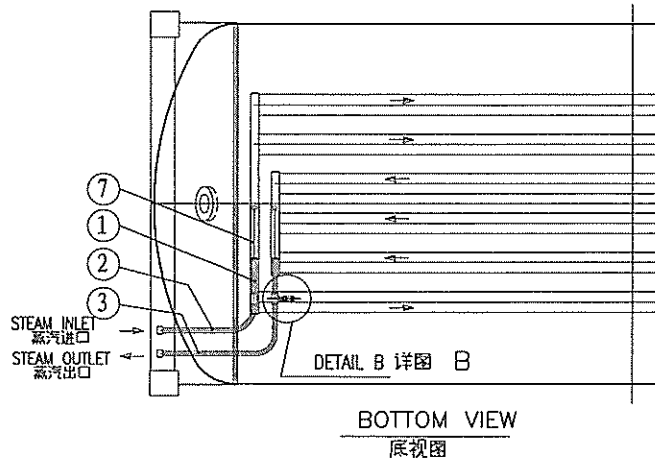
REQD TOL	NOMINAL DIMENSIONS (SHORT SIZE OF BRACKET)				NOMINAL DIMENSIONS			
	0	315	1000	1500	0	315	1000	1500
A	± 20	± 15	± 10	± 6	± 4.5	± 3	± 1	± 1
B	± 45	± 30	± 20	± 13	± 9	± 6	± 2	± 2
C	± 1	± 45	± 30	± 18	± 13	± 9	± 3	± 4
D	± 1	± 15	± 1	± 26	± 22	± 18	± 4	± 7

REVISION A			DRAWING APPROVAL		
AUTHORITY	SIGNATURE	DATE	AUTHORITY	SIGNATURE	DATE
DRAWN			DESIGN		
DESIGN			QUALITY ASSURANCE		
QUALITY ASSURANCE			CONTRACTS		
CONTRACTS			INSPECTION AUTHORITY		
INSPECTION AUTHORITY			CLIENT		

IMPORTANT NOTE(S):
 重要提示:
 1) ALL MARKINGS TO BE BLACK LETTERING AND WHITE BACKGROUND UNLESS OTHERWISE SPECIFIED (SEE NOTE 2 AND PART LIST DESCRIBED)
 除注释和表格说明, 所有标记为白底黑字;
 2) ITEM 3, 4, 5 AND 13 TO BE BLACK LETTERING AND YELLOW BACKGROUND
 序号3, 4, 5和13黄底(RAL1003)黑字;
 3) THE FONT AS PER OUR SUPPLIED.
 字体由我们提供。
 4) ITEM 19 TO BE TRANSPARENT BACKGROUND
 序号22为透明底。

PARTS LIST				
No.	QTY	MAT CODE	DESCRIPTION	REFERENCE
24	2		NO FORKLIFT LIFTING DECAL	
23	1	KISSCUT	UIC WEIGHT MARK	
22	2		SINGAMAS LOGO	
21	1		REMOTE CONTROL CABLE DECAL	
18	2	KISSCUT	OWNER LOGO (300mm HIGH, COLOUR RAL5010)	
17	1	KISSCUT	NOMINAL CAPACITY (70mm HIGH)	
16	1	KISSCUT	WEIGHT PANEL (70mm HIGH)	
15	2	KISSCUT	APPROVALS DECAL (70mm HIGH)	
14	2	KISSCUT	WORKING PRESSURE DECAL	
13	2		SUPER HEAVY DECAL	
12	6	KISSCUT	ISO AUTO CONTROL NUMBER (100mm HIGH)	
11	6	KISSCUT	SERIAL NUMBER (100mm HIGH)	
10	6	KISSCUT	OWNER CODE (100mm HIGH)	
9	4	KISSCUT	COUNTRY CODE, DIMENSION & TYPE(100mm HIGH)	
8	2		NO STEP DECAL	
7				
6	1		'IN/OUT' DECAL FOR STEAM TUBE INLET(10mm HIGH)	
5	1		EARTH DECAL	
4	1		OVERHEAD POWER LINE WARNING DECAL	
3	2		MAX. HEIGHT DECAL	
2	1		'STEAM HEATING' DECAL (8mm HIGH)	
1	2		UIC APPROVAL DECAL	
SINGAMAS GUANGDONG SHUN AN DA PACIFIC CONTAINER CO., LTD. GANGKOU ROAD LEIJIU SHIRIHOE FOSHAN GUANGDONG, CHINA 528322 TEL: +86 757 25337643 FAX: +86 757 25337622				
SCALE: N.T.S.		CLIENT: Eagle Liner		
DRAWN: KENZUN		DRAWING NAME:		
CHECKED:		25 000 Ltr TANK MARKINGS		
REVIEWED:		标志		
APPROVED:		DRAWING NUMBER / 204		
DATE: 03-05-2009		FF3 0922 25 TM 02 0		
THIS DRAWING AND INFORMATION IS THE PROPERTY OF SINGAMAS AND MAY NOT BE COPIED TO ANY THIRD PARTY WITHOUT ANY WRITTEN PERMISSION.		MODEL JOB NR CAPTY SECT'N SHI NR REV.		

REVISION A 版本 A				DRAWING APPROVAL 图样审核		
AUTHORITY 项目	SIGN. 签名	DATE 日期	DESCRIPTION 描述	AUTHORITY 项目	SIGN. 签名	DATE 日期
DRAWN 制图				DESIGN 设计		
DESIGN 设计				CHECKED 校核		
CHECKED 校核				REVIEWED 审核		
REVIEWED 审核				APPROVED 批准		
APPROVED 批准				CLIENT 客户		



NO.	ITEM NO.	DESCRIPTION	QTY	UNIT	STANDARD	REMARKS
12		WIRE ROPE #1.5规格 L=300	2	ASTM A242 304	0.001	0.002
11		ALUMINUM FRISK-HUB 2mm螺孔头	6	5052	0.001	0.01
10		1/2" BALL VALVE 1/2"球阀	1	ASTM A240 304		0.005
9		1" BSP BLIND CAP 1" BSP盲法兰盖	2	ASTM A240 304	0.1	0.20
8	FF3-SPA-04	1" PIPE PIECE BOX 1" 蒸汽管帽	2	ASTM A240 304	1.13	2.25
7	Q8/T 97.1	WASHER 垫圈 6	4	ASTM A240 304	0.003	0.01
6	Q8 889.1	NYLON LOCKWIT 尼龙锁紧螺母 M8	4	ASTM A240 304	0.01	0.02
5	J815389	1" STEAM PIPE CLAMP 1" U形螺栓 M8	2	ASTM A240 304	0.1	0.20
4	FF3-SPB-00	STEAM PIPE BRACKET 蒸汽管支架	1	SPA-M		2.08
3	FF3-25-SPA-03	CONNECTION PIPE (OUTLET) 蒸汽连接管	1	ASSEMBLY 组合件		3.06
2	FF3-25-SPA-02	CONNECTION PIPE (INLET) 蒸汽连接管	1	ASSEMBLY 组合件		1.52
1	FF3-SPA-01	1"-SCH10 PIPE PIECE 1" 蒸汽管	2	ASTM A240 304	0.64	1.28

NO.	REV.	DATE	DESCRIPTION	BY	CHKD	APPD	REMARKS

DATE: 04-03-2009 DRAWING NUMBER / 29

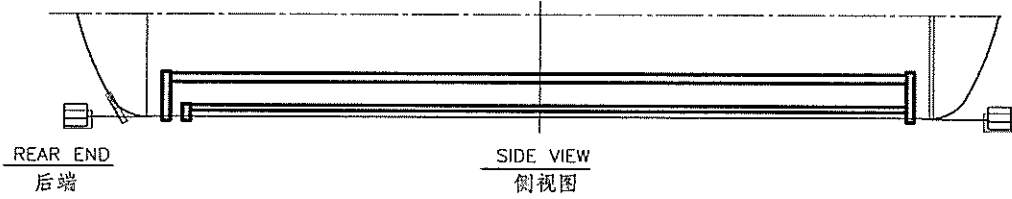
THIS DRAWING AND INFORMATION IS THE PROPERTY OF SINGAMAS AND MAY NOT BE COPIED OR REPRODUCED WITHOUT ANY WRITTEN PERMISSION.

FF3	0918	25	SPA	00	0
MODEL	JOB NR	CAPTY	SECTN	SHT NR	REV.

SINGAMAS
 GANGKOU ROAD
 LEIJIA SHANDE FOSHAN
 GUANGDONG, CHINA 525322
 TEL: +86 757 25337843
 FAX: +86 757 25337822

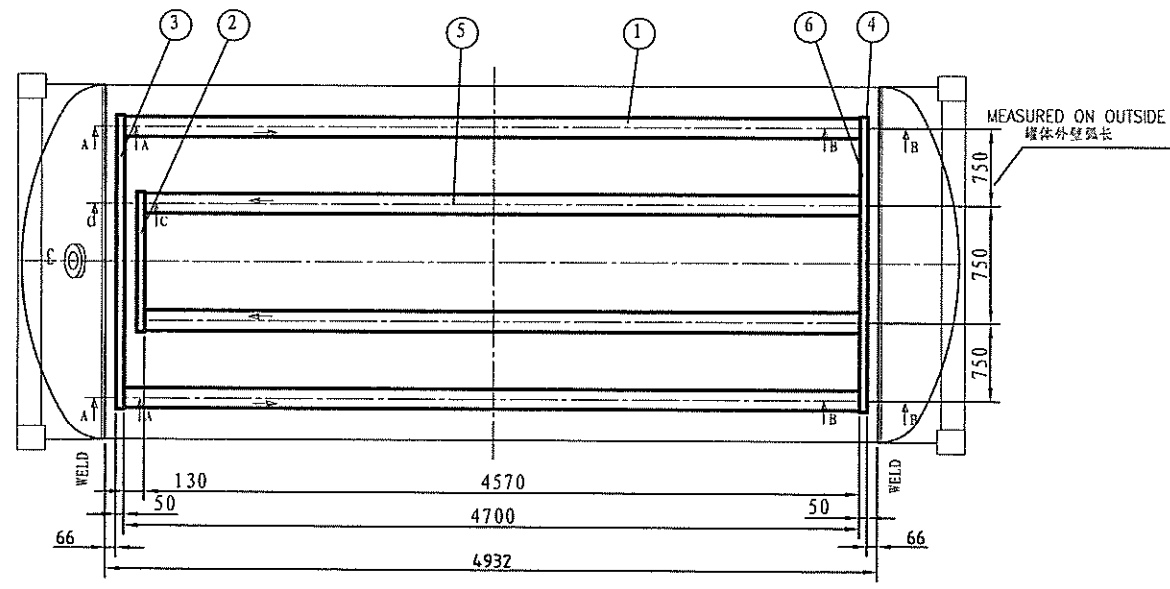
SCALE: N.T.S. CLIENT: Eagle Liner

DRAWN: Kemaun DRAWING NAME:
 CHECKED: 25000Lr STEAM PIPING ASSEMBLY
 REVIEWED: 蒸汽管道零件
 APPROVED:



DESIGN 设计		
CHECKED 校核		
REVIEWED 审查		
APPROVED 批准		

CHECKED 校核		
REVIEWED 审查		
APPROVED 批准		
CLIENT 客户		



VIEW ON UNDERSIDE OF TANK
底视图

